



DAILY Horizons

April 2015

Volume 7, Issue 1



Welcome From the Chair

Dear Gathering friends,

The members of the Gathering Work Groups happily welcome you to Presbyterian Women's 2015 Churchwide Gathering. We're looking forward to seeing you in Minneapolis!

Using 1 Corinthians 12:12-27 and the theme "One Body, One Spirit," this hard-working and dedicated group of women has spent the past 17 months planning a Gathering that will offer you the chance to experience community with Christian women from across the country and around the world.

Come prepared to renew your inner spirit, to engage in the joy of sharing your interests with others, and to truly enjoy yourself. There will be something at the Gathering for everyone!

Blessings to each of you,

Shelda Wills

2015 Gathering Chair



Seeing Yourself at the Gathering

Presbyterian Women cherishes our Gatherings! Photographers, reporters, videographers, historians, scrapbookers and many others will be capturing Gathering moments. By being a part of this event, you may find your image, voice, feedback and quotes used in reporting or promotion. By attending and participating in the Gathering, you give Presbyterian Women in the Presbyterian Church

(U.S.A.), Inc., its affiliated institutions, related entities and ecumenical partners permission to use your image, voice, feedback and quotes on a perpetual, worldwide, irrevocable basis in any and all media including, but not limited to, websites, print, cable and broadcast media without submission or resubmission to you for approval. You understand that third parties accessing web pages can download your image, voice and quotes, and you release Presbyterian Women in the Presbyterian Church (U.S.A.), Inc., its affiliated institutions, related entities and ecumenical partners from any liability to you, your heirs or your assigns in connection with or arising out of such downloading by third parties.

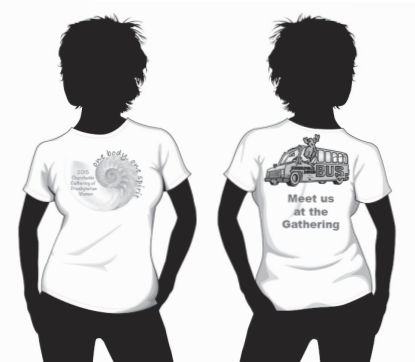
Don't forget to watch for Gathering coverage on www.presbyterianwomen.org/gathering and in the September/October 2015 issue of *Horizons*.



BEFORE YOU ARRIVE

Some elements of the Gathering require advance registration or planning. Be sure to make arrangements for these things in advance of your arrival in Minneapolis.

Gathering Logo Wear



In an age of customization, even your Gathering t-shirt (or scarf, bag or other item!) can be customized! Presbyterian Women has created the “One Body, One Spirit” logo and, from there, it’s up to you!

Go to www.presbyterianwomen.org/gathering and download the Gathering logo (black-and-white or color) and the permission letter, then let a local screen printer work some magic on your custom logo item. Or create an iron-on transfer on your home computer! (You can purchase the materials at an office supply or craft store.) Create your own personalized item, complete with your name. Or get together with your PW group (in the congregation, presbytery or synod) to create an item that identifies you as a group. Add the Gathering logo to t-shirts, jackets, scarves, tote bags, hats, shawls, anything!

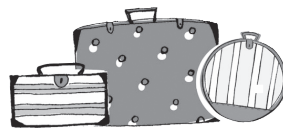
Now through August 31, Enough for Everyone’s sweat-free t-shirts are on sale for \$5 each,

plus shipping. They are available in adult and child sizes, and in white, natural or royal blue. Visit www.presbyterianmission.org/ministries/enough/get-shirts for more details.

And don’t forget to take and share pictures of the creation process! Post your pictures on Facebook and tag PresbyterianWomenPCUSA. Or email your photos with a short explanation (and as many names for the caption as you can provide) to yvonne.hileman@pcusa.org.

Packing List

What to Pack



- All registration materials received (including your registration booklet and this issue of *Daily Horizons*!)
- A copy of your hotel confirmation and the street address of your hotel
 - Hyatt Regency Minneapolis —1300 Nicollet Mall
 - Doubletree Suites Minneapolis —1101 Lasalle Avenue
 - Hilton Minneapolis —1001 Marquette Ave South
 - Millennium Hotel Minneapolis —1313 Nicollet Mall
- Casual clothes and comfortable walking shoes (and don’t forget a sweater for chilly conference rooms!)
- Bling and/or your favorite PW or Gathering logo wear for the Friday night banquet; tiaras welcome! (see “Friday Night Celebration,” p. 7)
- Medical insurance card and all necessary medications, including over-the-counter medications
- Camera (Note: flash photography is not permitted during plenary sessions)
- Clearly and creatively marked luggage for instant identification (Note: bring only as much luggage as you can manage by yourself)
- Your favorite tote bag, backpack or purse (Gathering tote bags required advance purchase, but a limited number will be available at the Gathering)
- Current government-issued photo identification (required to board all commercial aircraft)
- Target gift cards in \$10 increments (see “One Small Gift (Card!)” on p. 3)
- Reusable water bottle
- Hijab for silent witness (see “Join a Silent Witness,” p. 7)
- Mission scrapbook page(s) (see p. 3 for details)
- Cash for tips, Cents-Ability and other giving opportunities as well as your credit or debit card for shopping and dining

BEFORE YOU ARRIVE

What to Leave at Home

- Anything of monetary or sentimental value that cannot be replaced
- The number for your hotel and the name under which your room is booked
 - o Hyatt Regency Minneapolis—612/370-1234
 - o Doubletree Suites Minneapolis—612/332-6800
 - o Hilton Minneapolis—612/376-1000
 - o Millennium Hotel Minneapolis—612/332-6000
- A copy of your travel plans

Download the Gathering App

For the first time, a Gathering app is available!



The 2015 Gathering app allows you to view schedules, locations, events and speaker information, get the latest news, expand your network and have fun! This app is intended for use by Android or iPhone users attending the Churchwide Gathering of Presbyterian Women.

To download the app, from your smart device, visit <http://my.yapp.us/PWGATHERING> or scan the image



on the left with your smartphone's QR reader. If you do not already have Yapp

installed, you will be forwarded to

the appropriate location (either the iPhone app store or the Google store for Android) to download it. After downloading Yapp, you will be directed to start using Yapp, and will need to select the “I’ve been invited to a Yapp” button. If you typed in the <http://my.yapp.us/PWGATHERING> address, Yapp will display the Gathering app as one of your invitations.

If you have questions regarding the app, email pwithelp@pcusa.org or call Stephanie Morris, 844/PW-PCUSA (844/797-2872), ext. 5358.

One Small Gift (Card!)

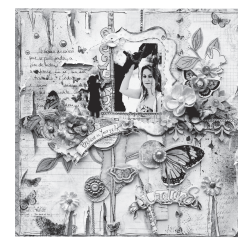
Consider bringing a \$10 prepaid Target gift card to the Gathering for the American Indian Family Center (AIFC) in St. Paul. This St. Paul program supports Native American families by valuing and strengthening the American Indian community and its culture. The AIFC runs the Wakanyeja Kin Wakan Pi (Our Children Are Sacred) Program, which provides direct services to Native American women during the prenatal and postnatal periods. Culturally-specific case management services help ensure healthy birth outcomes and good health for the mother and baby. Wakanyeja Kin Wakan Pi coordinates mothers’ support groups and offers classes on parenting, nutrition and good health.



Should you wish to donate more than \$10, please purchase additional gift cards in the amount of \$10 each. The gift cards will be collected at the Gathering registration area and dedicated during a worship service at the Gathering. These small cards are easy to pack, but they pack a very big impact!

Mission Scrapbook Project

Help us prepare an online mission scrapbook! Bring a 12" x 12" scrapbook page to the Gathering



that highlights PW mission! Please include pictures and text to tell us about the project—when, where, why, who, how and so on! On the back of the page, include the name of the church, presbytery or synod who worked on the mission project; the name, email and phone number of a contact person; and a signed release for individuals in the photos, available on www.presbyterianwomen.org/gathering.

Congregations may submit one page; presbyteries and synods may submit up to three pages, with contact information on each page. Bring your scrapbook page to Presbyterian Women’s exhibit in the Activities Hall. The pages will be displayed during the Gathering. The pages will not be returned to you; instead they will be digitized and shared in an online mission scrapbook!

BEFORE YOU ARRIVE

Wheelchair Rentals

The Hyatt Regency is accessible by wheelchair. To rent a wheelchair or motorized scooter, contact Dahl Medical Supply, 612/334-3159, prior to arriving, and arrange for delivery to your hotel in your name. You are responsible for making these arrangements and for rental payment.

Child Care

Child care at the Gathering is being coordinated by College Nannies and Tutors of Edina, Minnesota. Advance reservations are required by May 1.

Contact Renee Brasseur for fees and information —call 952/285-7667 or email rbrasseur@collegenannies.com and reference the PW Churchwide Gathering. A variety of care options is available.

Your Church and Your Call

SanDawna Gaulman Ashley, Office of the General Assembly's manager for call process support and teaching elder ministries, will be available for Call Seeker's training and discussions about ministries. She will offer Call Seeker's training for all church professionals, providing suggestions on writing effective Personal Information Forms (PIF) and finding calls. One-on-one coaching and PIF review will be available by appointment. SanDawna will also lead discussions on ministry transitions and seeking

pastoral leadership for Committee on Ministry (COM) representatives and interested congregational members.

To schedule an appointment for June 18 or 19, contact SanDawna, sandawna.ashley@pcusa.org or 888/728-7228, ext. 5730.

Special Meals

Synods, presbyteries and/or special interest groups may opt to schedule a special meal during breakfast on Friday, Saturday or Sunday; lunch on Friday; or dinner on Saturday. To schedule a group meal, contact Amy Kettner at the Hyatt Regency, amy.kettner@hyatt.com or 612/596-4532.



Calling Shutterbugs and Roving Reporters!

There's so much happening at the Gathering, we'll need a bevy of volunteer photographers and writers to help to document it all! If you're bringing a digital camera and would be willing to share your photos, please contact Laura Lee, laura.lee@pcusa.org or 844/PW-PCUSA (844/797-2872), ext. 5400. If you're interested in writing short articles (less than 400 words) about Gathering events, please contact Sharon Dunne Gillies, sharon.gillies@pcusa.org or 844/PW-PCUSA (844/797-2872), ext. 5688.



Ready, Set, Read!

Three book groups will take place at the Gathering. If you haven't already read the books, borrow, buy or listen to these three great reads, selected with PW in mind.



During the Gathering, go to Lakeshore (Hyatt main level) on Thursday, Friday and/or Saturday, 5–5:45 PM to discuss them.

- *The Submission* by Amy Waldman—Thursday, June 18
- *Paula* by Isabel Allende—Friday, June 19
- *Learning to Walk in the Dark* by Barbara Brown Taylor—Saturday, June 20

Donations to the Silent Auction

Once again, the Gathering will include a silent auction. Donate handmade crafts, one-of-a-kind experiences and other fun gems. All proceeds will benefit the Mission Pledge, which funds nearly every PW program.

Items should be new and have a minimum value of \$25; remember, smaller items can be grouped into a basket. Craft and artisan items are welcome. To arrange for your item to be included in the auction, download the silent auction form from www.presbyterianwomen.org/gathering. You will be responsible for getting the item to Minneapolis, and bringing it to the PW exhibit space in the Activities Hall. To learn

AFTER YOU ARRIVE

more about the silent auction, contact Katie Blume, kdb616@gmail.com, or Rhonda Martin, 844/PW-PCUSA (844/797-2872), ext. 5596 or rhonda.martin@pcusa.org.

Gathering Facilities

Gathering programming is being held at the Hyatt Regency Hotel, with some side events and meals just across the street at Westminster Presbyterian Church. Due to an excellent Gathering registration response rate, rooms with two double beds at the Hyatt went quickly! Additional rooms have been blocked for PW at the Hilton Minneapolis, Doubletree Suites Minneapolis and Millennium Hotel Minneapolis, all of which are within easy walking distance of the Hyatt. A map of the Hyatt will be in the program book, which you'll receive upon registration check-in at the Gathering.

Finding Your Hotel from Minneapolis Airport



There are a number of economical options for getting from the Minneapolis–St. Paul International Airport to your hotel.

- Get on a blue line Light Rail Transit (LRT) train at the airport and take it to the Nicollet Mall stop (the 11-block area of Nicollet Avenue that holds the Hyatt, Hilton and Millennium hotels).

Trains run every 10 minutes during peak hours and every 10 to 60 minutes at other times of the day. Fares for adults are \$1.75–\$2.25. Pick up a bus at the Nicollet Mall stop that will take you to the door of the Hyatt or Millennium. For the Hilton, take the bus to the 11th Street stop, then walk one block east to 11th Street and Marquette Avenue. For the Doubletree Suites, take the bus to the 11th Street stop, then walk one block west to 11th and Lasalle Avenue. Look for buses marked “Free ride” when boarding along Nicollet Mall. Other buses are just \$0.50.

- Reserve a ride (ranging from a ride-share van to a chauffeured sedan or van) through SuperShuttle, 800/258-3826 or www.supershuttle.com. Costs, which are subject to change, range from \$18 per person (for ride-share van) to a \$99 flat fee (for multiple passengers in one car/van).
- Taxis will be available (or may be arranged) at the airport.

Hotel Finances

To avoid duplicate or mixed charges, check hotel bills the night before checkout, then again at checkout. Work with your roommate and the front desk to be sure bills are accurate—i.e., charges are billed to the appropriate roommate and that no additional credit card charges appear. Keep a copy of your receipt to check against your credit card statement.

Parking

If you drive to Minneapolis, don't forget to budget money for parking your car. Self-parking is \$13–21 per night (subject to change), depending on your hotel. Some of the Gathering hotels have valet parking for additional charge.

Helpful Tip

PW suggests that a \$2 per person tip be left each morning for hotel housekeeping services. Women provide most of these helpful services and often work for minimal wages.

Registration Materials Pick-up

Gathering attendees should go to Nicollet Promenade (Hyatt main floor) between 11 AM and 7 PM on Thursday, June 18, to pick up your name tag, workshop confirmation and program book. If you arrive Friday or Saturday, registration will still be at the Nicollet Promenade, open 10:30 AM until 6 PM.

Tote Bag and Pin Pick-up

If you ordered a Gathering tote bag when you registered, you will receive a ticket with your registration materials at pick-up. Bring that ticket to Presbyterian Women's space front and center in the Activities Hall (Hyatt main floor) any time the hall is open. A limited number of tote bags will be available for purchase in the Presbyterian Bookstore.

AFTER YOU ARRIVE

If you registered before March 20, you will receive a ticket for a limited-edition Gathering pin. Take the ticket to Presbyterian Women's space in the Activities Hall (Hyatt main floor) any time the hall is open.

Gathering Orientation

As a first-time attendee or as a seasoned Gathering participant, you will have an opportunity to learn important information that will make your Gathering experience more informed and enjoyable. Bring your program book and get the details on everything you'll want to know, from meals to plenary sessions, workshops to free time, and much more. Orientation will be held three times on the first day of the Gathering, Thursday, June 18, at 2:30, 3:30 and 4:30 PM in Lakeshore A and B (Hyatt main floor).

Information Centers

Are you lost? Confused? Do you need questions answered about the wheres and whens of the Gathering? Two information stations are ready to help!

- The PW space in the Activities Hall (Hyatt main floor)
- The Gathering office in Loring (Hyatt main floor)

Business Meeting

Every PW Churchwide Gathering includes a Business Meeting. For the

2015 Business Meeting, more than 200 voting representatives from across the country will receive reports, adopt a budget, elect leaders and much more. The Business Meeting is open to all and will be held in the Greenway Ballroom (Hyatt second floor) Wednesday, June 17, 7–9 PM and Thursday, June 18, 9 AM–5 PM. Business Meeting highlights will be presented during the Friday morning plenary session and published at www.presbyterianwomen.org/gathering.

Volunteers

Volunteers should go to Nicollet Promenade (Hyatt main floor) to check in. Volunteer check-in will be open 11 AM–7 PM on Thursday, June 18 and 10:30 AM–6 PM on Friday and Saturday, June 19 and 20.

Thank you for volunteering to serve Communion! Hundreds volunteered and a number will be selected based on age, geographic and ordination diversity. Those selected will be contacted by the end of May.

Mission Tour Transportation

If you're registered for Mission Tours A or C, transportation has been arranged to the sites. Gather in the main hotel lobby 10 minutes before the scheduled start time of the tour to ride the bus. If you're registered for Mission Tour B, you're responsible for transportation to the

site. (Light rail is convenient, or the hotel concierge may have other suggestions.).

Staying Hydrated

Water stations will be set up throughout the Hyatt. PW discourages the use of bottled water since bottling can cause water crises for communities where bottlers operate and create excessive plastic waste that contains harmful chemicals. Pack your own reusable water bottle to fill up and take with you throughout the day.



Cents-Ability

Sharing in Jesus' name is the reason Presbyterian Women

supports the Presbyterian Hunger Program and Cents-Ability. At each meal during the Gathering, look for Cents-Ability banks on the tables in the dining hall. Deposit your spare change as thanksgiving for what you have, and offer a prayer for those who are in need.



Meals and Dining

Breakfasts are on your own, as are lunch on Friday and dinner on Saturday. There are a variety of locations to choose from, including cash and carry choices at hotels and restaurants nearby.



AFTER YOU ARRIVE

Daily Horizons



This is your first issue of the (almost!) daily Gathering newsletter. Bring this issue with you to help orient you when you arrive. Two issues will be published during the Gathering. Newsstands will be located outside the Activities Hall and outside the plenary space.

This issue is a download only. The issues printed during the Gathering will also be available as downloads. During the Gathering, please be a good steward of these hot commodities and take only one copy, knowing you can download later and share with as many people as you'd like!

Programs at the Gathering

Once you pick up your program book, take a few moments to acquaint yourself



with the schedule and programming list. You'll want to start planning your visits to the Clothesline Project, Spirituality Center, exercise classes, Activities Hall and get-togethers.

Moderators' Reception

Thanks to an anonymous donor, a moderators' reception will be held (with ice cream!) following Thursday night's plenary session. The new moderatorial team will have been elected during the Business Meeting, held just prior to the Gathering. Come to the reception ready to meet the 2015–2018 team, and to celebrate with the 2012–2015 team.

Friday Night Celebration!

One thing you won't want to miss is Friday night's big party—in honor of Presbyterian Women! Replacing the usual dinner followed by plenary, Friday night will feature a banquet with programming. International guests will be

announced, then surprises and entertainment will follow! This is the night to bring your bling, your noisemakers, party hats and playfulness. If you made a logo shirt or brought a tote bag from a previous Gathering, bring it to the party! Who doesn't like a fashion show? See you at 6:30 PM!

Join a Silent Witness

A silent witness will be held outside the plenary hall at 7 pm (before Saturday evening's plenary session) to raise awareness of discrimination and the intersectionality of discrimination. Gathering attendees (both women and men to highlight gender discrimination) are invited to wear a hi-jab or other headscarf to stand in solidarity with our Arab and/or Muslim sisters who experience discrimination. While visual focus will be on discrimination against Arab and/or Muslim women, participants in the silent witness are welcome to bring

Gathering Superlatives Challenge

Getting to the Gathering usually generates a few stories, maybe even some extremes!



- How many miles did you travel to get to the Gathering?
- How many PWs came from your church, presbytery and synod?
- Are you the oldest attendee?
- Are you the youngest attendee?
- Do you have family with you? How many of them?

Come by Presbyterian Women's space in the Activities Hall on Thursday or Friday to suggest categories. With your stories, we'll assemble a list of our Gathering Superlatives to be revealed at the banquet. The winners of the Gathering Superlatives Challenge will have their picture taken for posterity . . . and be the owners of bragging rights!

AFTER YOU ARRIVE

signs that speak to other forms of discrimination and marginalization, such as “Black Lives Matter,” “Do I Look Like an Alien?” and “I’ll Ride With You.”

Engage with Presbyterian Women

Well, that will happen everywhere during the Gathering! Be sure to visit Presbyterian



Women’s exhibit in the Activities Hall. Come to learn about all the ways that PW is involved with leadership development, justice, peace and mission worldwide. Celebrate the many ways that Presbyterian Women and our partners engage in ministry throughout the United States and the world. Honor someone you know

with an Honorary Life Membership. And put your hands to hands-on ways to live out Presbyterian Women’s Purpose!

While you’re there, check on your subscription to *Horizons* (or subscribe!), and find out where you can read and hear more from your favorite magazine and Bible study authors.

Look for a daily schedule of events in the PW corner, adjacent to the PW exhibit.

Shopping at the Gathering

The Presbyterian Bookstore will have an array of PW and PC(USA) resources for sale, including Gathering items. The Global Marketplace will sell a variety of fair trade items, including crafts, artisan items and edibles! Visit them in the Activities Hall.

Thank You, Sponsors!

A number of businesses and organizations generously offered financial or material support for the Gathering. Their support is greatly appreciated!

- Presbyterian Foundation
- Board of Pensions
- Cambey & West

See the program book for a complete list of sponsors and donors.

